

Product Line-up

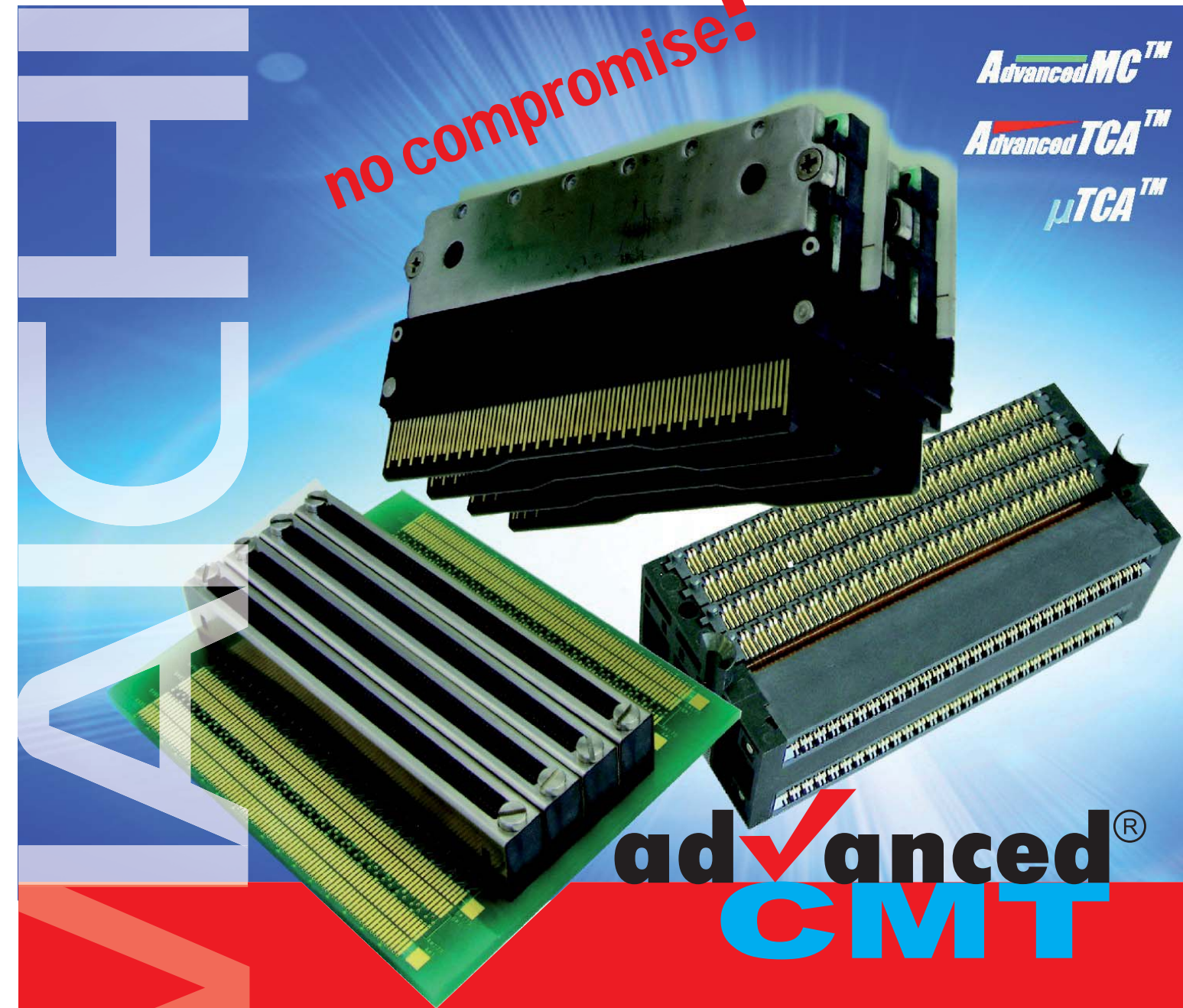
CN074-085-0003	Type B	Pin Count	85		
CN074-170-0005	Type B+		170		
CN074-170-0006	Type AB		170		
CN074-340-0001	Type A+B+		340		
CN074-340-0003	Type A+B+ mid-size	Pin Count	340		
CNU004P-030-*0001	90° Plug	Pin Count	30		
CNU004S-030-*0001	180° Socket	Pin Count	30		
CN091S-0411	RJ45 1 x 4				
CN080-170-0001	Standard Type	Pin Count	170		
CN080-170-0002	with special stiffener		170		
CN080-170-0011	with long screws for 5mm PCB thickness		170		
CN080-170-0012	with special stiffener and long screws		170		
CN084-680-1232-1010-0	Pin count 680 MCH-1		CN084-680-1332-1110-0		
	MCH-2		Pin count 680 MCH-1		
	MCH-3		MCH-3		
	MCH-2		MCH-3		MCH-2
CN084-340-0032-0010-0	Pin count 340 MCH-3		CN084-340-1200-1000-0		
	MCH-2		Pin count 340 MCH-1		MCH-2
CN084-170-1000-1000-0	Pin count 170 MCH-1		CN084-170-0030-0010-0		
			Pin count 170 MCH-3		

For other CN084 combinations and assembly tooling please contact Yamaichi

YFLEX® is a registered trademark of Yamaichi Electronics Co., Ltd. AdvancedMCTM, AdvancedTCA™ and μTCA™ are registered trademarks of PICMG

Specifications in this document are reference values for representative products of each series. Since product improvement entails changes to electrical, material and mechanical properties, the purchasing party is strongly encouraged to inquire about the latest specifications before placing a purchase order.

Version Feb 2008



Connectors for
AdvancedTCA
MicroTCA
Advanced Mezzanine Cards

WWW.YAMAICHI.EU

advanced[®] CMT

ADVANCEDMC CONNECTORS FOR ADVANCEDTCA AND MicroTCA

no compromise!

Yamaichi Electronics high speed and high frequency technology for the next-generation network equipment

Advanced TCA[®] and MicroTCA[®] are open architectures standardized by PICMG.

Yamaichi supports the industry's latest standard

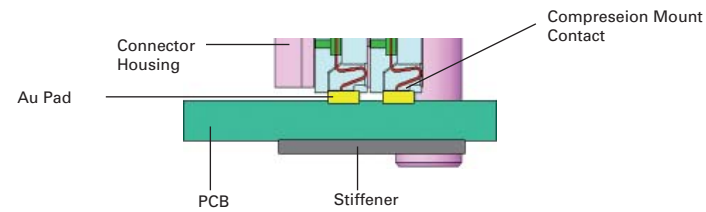


COMPRESSION MOUNT TECHNOLOGY = CMT

AdvancedCMT is the quality trademark of Yamaichi Electronics for connectors used in Advanced TCA[®] and MicroTCA[®]

The electrical contact is established through the compression of the two contact faces by screwing the component to the PCB. A stiffener is screwed from the backside to avoid stress on the PCB.

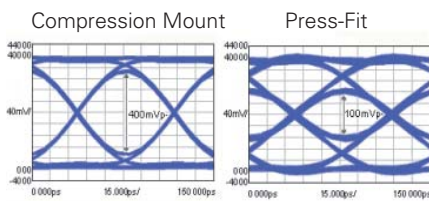
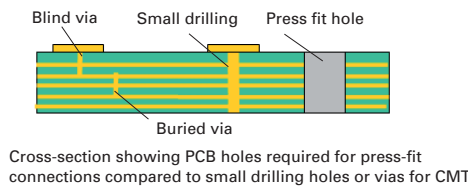
Easy field repair and component replacement is possible.



✓ CMT SPEED

CMT allows the usage of blind via's, micro via's or drillings with a very small diameter thus

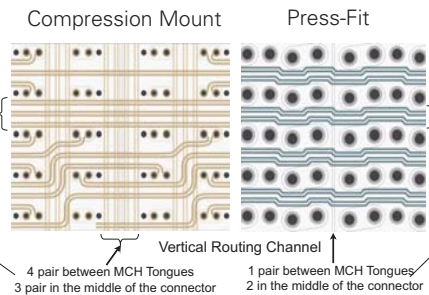
- reducing stub-effects and reflexion
- reducing cross-talk and insertion loss
- providing characteristic impedance matching
- enabling transmission waveform @12.5 Gbps



✓ CMT FLEXIBILITY

The usage of blind via's, micro via's or drillings with very small diameter also provides

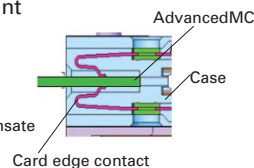
- more space for signal routing on the backplane
- possibilities to reduce the number of backplane layers up to 30%
- cost saving due to less backplane layers



✓ CMT RELIABILITY

AdvancedCMT connectors from Yamaichi have proven their reliability under vibration, temperature etc. according to all relevant specifications for both the CMT and the card edge connection area

- Yamaichi is using wider contacts to compensate manufacturing tolerances of the PCB
- No additional "guiding" needed



Yamaichi contact shape has the contact point at the bending area (not at the stamping / cutting area)

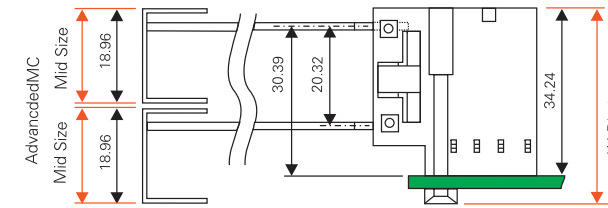


CN074 ADVANCEDMC[™] CONNECTORS FOR AdvancedTCA[™]

- High speed interface up to 12.5 Gbps
- Design acc. PICMG AMC.0
- Full range of specified versions: Type B, B+, AB, A+B+
- Custom pin configuration possible
- Integrated high performance YFLEX



NEW
A+B+ for mid size AdvancedMC can be stacked in 1U blade size



CNU004 POWER CONNECTORS FOR AdvancedTCA[™]

- Power pins up to 16 Amps
- Signal pins up to 1 Amp
- Design acc. PICMG 3.0
- Number of contacts: 30 (max. 34); 8 Power contacts and 22 (max. 26) Signal contacts
- Various plating options available



NEW

CN091S RJ45 FOR AdvancedMC[™]

- Cat5e data transmission
- With LED green/yellow

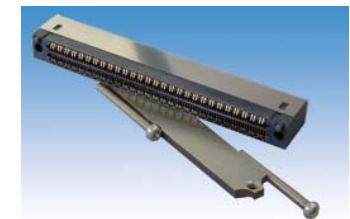
Height from the PCB	7.59mm
Total height	12.00mm
Width	59.40mm



CN080 ADVANCEDMC[™] CONNECTORS FOR μTCA[™]

- High speed interface up to 12.5 Gbps
- Design acc. PICMG MTCA.0
- Simplified routing to reduce backplane layers
- Easy replacement
- Metal housing for improved stability

NEW
- Component mounting on backside of backplane possible
- For PCBs up to 5mm thickness



CN084 PLUG FOR μTCA[™] CARRIER HUB (MCH)

- Mates with CN080 MicroTCA connector
- Up to 4 tongues (680 pins)
- High speed design up to 12.5 Gbps
- Reduced insertion and extraction force
- Various standard combination types available
- Flexible for customised set ups

NEW
Single tongue version: applicable also for standard AdvancedMCs

